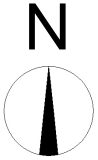
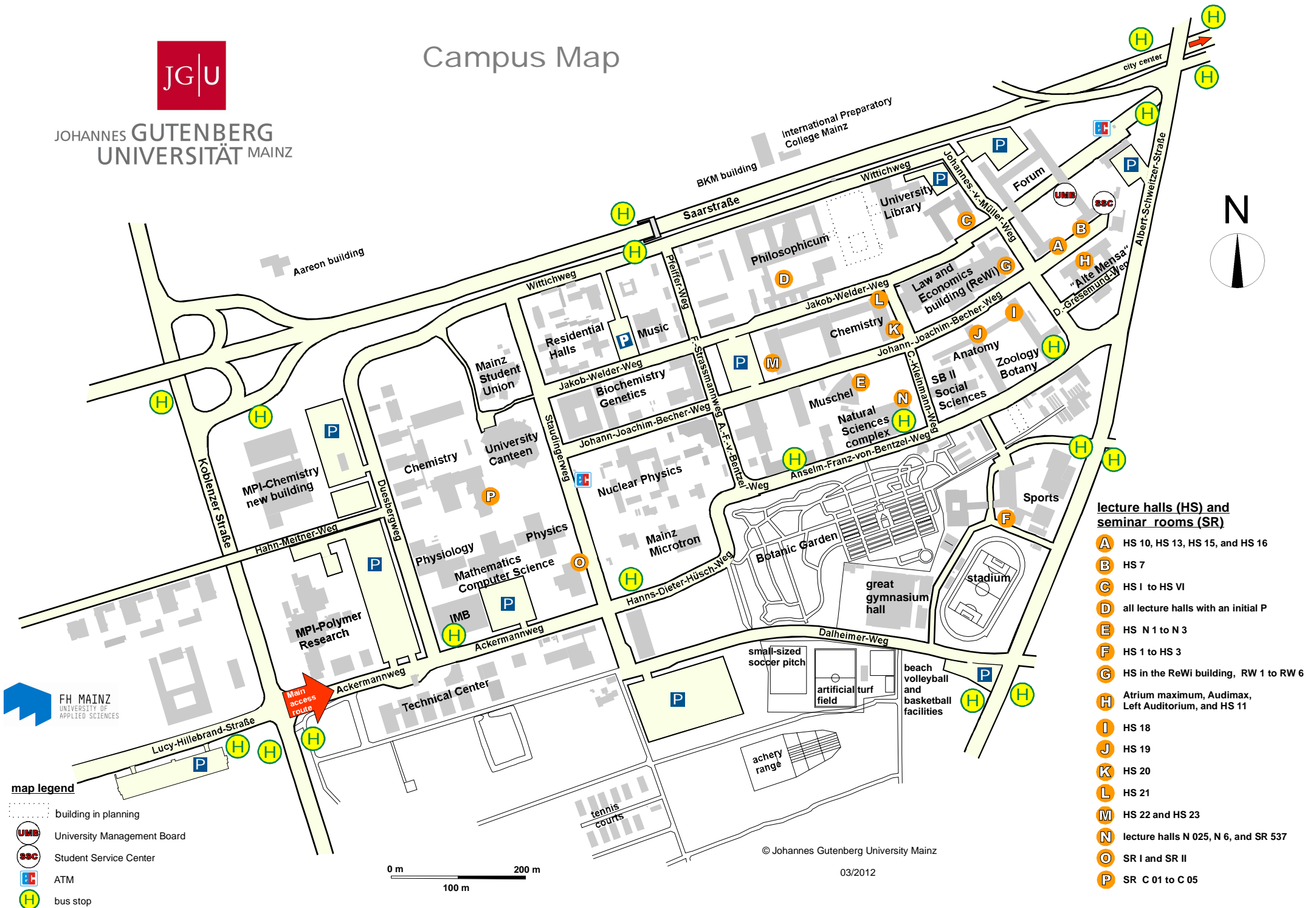




Campus Map

JOHANNES GUTENBERG
UNIVERSITÄT MAINZ



lecture halls (HS) and seminar rooms (SR)

- A** HS 10, HS 13, HS 15, and HS 16
- B** HS 7
- C** HS I to HS VI
- D** all lecture halls with an initial P
- E** HS N 1 to N 3
- F** HS 1 to HS 3
- G** HS in the ReWi building, RW 1 to RW 6
- H** Atrium maximum, Audimax, Left Auditorium, and HS 11
- I** HS 18
- J** HS 19
- K** HS 20
- L** HS 21
- M** HS 22 and HS 23
- N** lecture halls N 025, N 6, and SR 537
- O** SR I and SR II
- P** SR C 01 to C 05



- map legend**
- building in planning
 - University Management Board
 - Student Service Center
 - ATM
 - bus stop

0 m 100 m 200 m

© Johannes Gutenberg University Mainz

03/2012